

Cantaloupe

Recommendations for Maintaining Postharvest Quality

Trevor V. Suslow, Marita Cantwell and Jeffrey Mitchell
Department of Plant Sciences, University of California, Davis



MATURITY INDICES

Cantaloupe (*Cucumis melo* L. var. *reticulatus* Naud.) is often, incorrectly, referred to interchangeably as Muskmelon. This botanical group, however, includes honeydew, crenshaw, Persian, casaba and other mixed melons.

Cantaloupes are harvested by maturity and not by size. Commercial maturity is ideally at the firm-ripe stage or "3/4 to full-slip" when a clear abscission (slip, separation) from the vine occurs with light pressure. Cantaloupes ripen after harvest but do not increase in sugar content (see below).

Cultivars vary in their external color at this stage of maturity and may retain a greenish cast. This skin color typically transitions from gray to dull green when immature, deep uniform green at maturity, and light yellow at full ripeness. A raised and well-rounded netting on the fruit surface is another indicator of proper com-

QUALITY INDICES

Well-shaped nearly spherical and uniform in appearance. Smooth stem end with no adhering peduncle (stem-attachment) which suggests premature harvest. Absence of scars, sunburn or surface defects. Firm with no evidence of bruising or excessive scuffing. Appears heavy for size and has firm internal cavity without loose seeds or liquid accumulation.

U.S. grades are Fancy, No. 1, Commercial and No. 2. Distinction among grades is based predominantly on external appearances and measured soluble solids. Federal Grade Standards specify a minimum of 11% soluble solids for U.S. Fancy ("Very good internal quality") and 9% soluble solids for U.S. 1 ("Good internal quality"). A calibrated refractometer, measuring °Brix, is accepted as the current standard for soluble solids measurements.

Sizing is based on count per 18.2 kg (40 lb.) container, most typically 9, 12, 15 and occasionally 18 or 23 melons per carton. An 18 to 45 count crate may also be used.

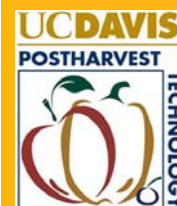
OPTIMUM TEMPERATURE

2.2°C-5°C (36°F- 41°F) Storage life is up to 21 days at 2.2°C (36°F) but sensory quality may be reduced. Typically 12-15 days of shelf life are attainable within the optimum range. Short term storage or transit temperatures below this range are used by some in the trade but may result in chilling injury after several days [for example, 7 days or longer at temperatures below 2.2°C (36°F)]

OPTIMUM RELATIVE HUMIDITY

90%-95%; High relative humidity is essential to maximize postharvest quality and prevent desiccation. Water loss through scuffed and damaged surface netting can be significant. Extended periods of higher humidity or condensation may encourage the growth of stem-scar and surface molds.

Produce Facts



RATES OF RESPIRATION

Temperature	0°C (32°F)	5°C (41°F)	10°C (50°F)	15°C (59°F)	20°C (68°F)	25°C (77°F)
ml CO ₂ /kg·hr	2 - 3 ^{NR}	4 - 5	7 - 8	17 - 20	23 - 33	65 - 71

To calculate heat production multiply ml CO₂/kg·hr by 440 to get BTU/ton/day or by 122 to get kcal/metric ton/day.

NR - not recommended for more than a few days due to chilling injury.

RATES OF ETHYLENE PRODUCTION

Intact fruit: 40-80 µl/kg·hr at 20°C (68°F)

RESPONSES TO ETHYLENE

Cantaloupes are moderately sensitive to exogenous ethylene and over-ripening may be a problem during distribution and short-term storage.

RESPONSES TO CONTROLLED ATMOSPHERES (CA)

Controlled atmosphere storage or shipping offer only moderate benefits for cantaloupes under most conditions. With extended transit times (14-21 Atmospheres (CA) days), cantaloupes are reported to benefit from delayed ripening, reduced respiration and associated sugar loss, and inhibition of surface molds and decay. Consensus atmospheres of 3% O₂ and 10% CO₂ at 3°C (37.4°F) has been demonstrated. Elevated CO₂ at 10-20% is tolerated but will cause effervescence in the fruit flesh. This carbonated flavor is lost on transfer to air.

Low O₂ (<1%) or high CO₂ (>20%) will cause impaired ripening, off-flavors and odors, and other condition defects.

PHYSICAL AND PHYSIOLOGICAL DISORDERS

Chilling injury. Typically occurs after storage at temperatures <2°C disorders (35.6°F) for several days. Sensitivity to chilling injury decreases as melon maturity and ripeness increases. Symptoms of chilling injury include pitting or sunken areas, failure to ripen, off-flavors and increased surface decay.

PATHOLOGICAL DISORDERS

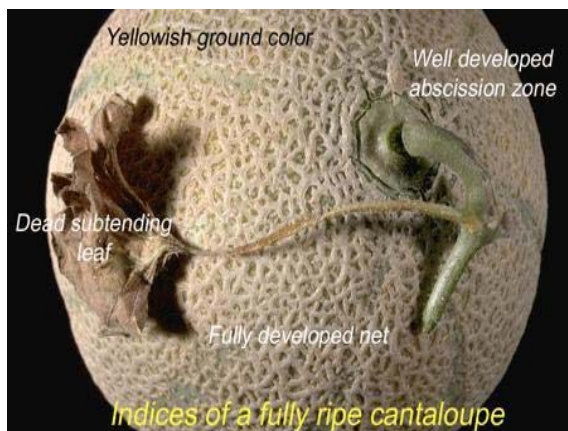
Disease can be an important source of postharvest loss depending on season, region and handling practices. Commonly, decay or surface lesions result from the fungal pathogens *Alternaria*, *Penicillium*, *Cladosporium*, *Geotrichum*, *Rhizopus*, and to a lesser extent *Mucor*. Treatment with hot air or hot water immersion (55°C for 0.5-1.0 min.) has been effective in preventing surface mold but has not been used extensively for commercial treatments. CA can be effective in delaying fungal growth on the stem-end and fruit surface.

SPECIAL CONSIDERATIONS

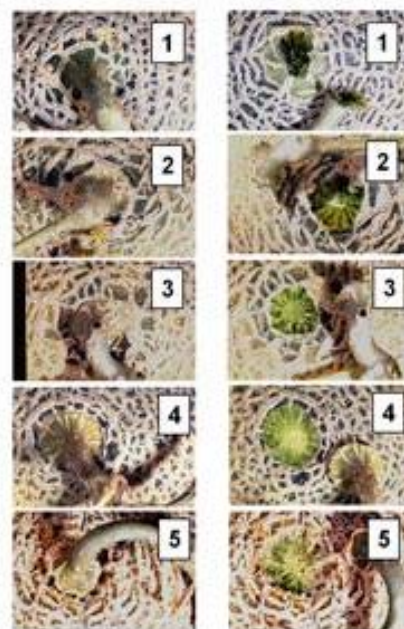
Rapid precooling soon after harvest is essential for optimal postharvest keeping quality. The precooling endpoint is typically 10°C (50°F) but 4°C (39.2°F) is more desirable. Forced-air cooling is the most common practice but hydrocooling is also utilized.

POSTHARVEST PHOTO GUIDE

MATURITY AND QUALITY



MATURITY INDICES

"SLIP" AND CANTALOUPE
RIPENESS

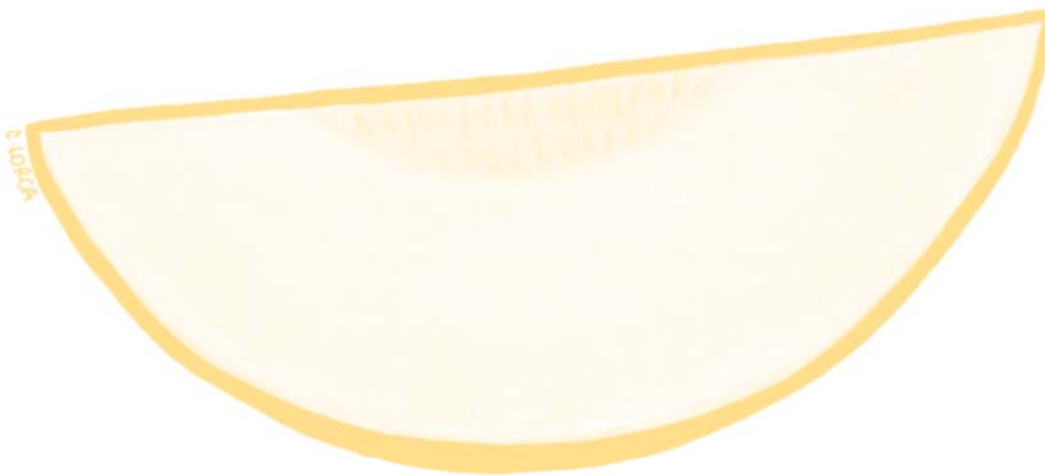
DISORDERS



RHIZOPUS



GEOTRICHUM



It is the policy of the University of California not to engage in discrimination against or harassment of any person, employed by or seeking employment with the University, or in any of its programs or activities, on the basis of race, color, national origin, religion, sex, gender, gender expression, gender identity, pregnancy, physical or mental disability, medical condition (cancer-related or genetic characteristics), genetic information (including family medical history), ancestry, marital status, age, sexual orientation, citizenship, or service in the uniformed services, as well as state military and naval service. This policy is intended to be consistent with the provisions of applicable state and federal laws and University policies. University policy also prohibits retaliation against any employee or person seeking employment for bringing a complaint of discrimination or harassment pursuant to this policy. This policy also prohibits retaliation against a person who assists someone with a complaint of discrimination or harassment, or participants in any manner in an investigation or resolution of a complaint of discrimination or harassment. Retaliation includes threats, intimidation, reprisals, and/or adverse

In addition, it is the policy of the University of California to undertake affirmative action, consistent with its obligations as a Federal Contractor, for minorities and women, for persons with disabilities, and for covered veterans. The University commits itself to apply every good faith effort to achieve prompt and full utilization of minorities and women in all segments of its workforce where deficiencies exist. These efforts conform to all current legal and regulatory requirements, and are consistent with University standards of quality and excellence. In conformance with Federal regulations, written affirmative action plans shall be prepared and maintained by each campus of the University of California, by the Lawrence Berkeley National Laboratory, by the Office of the President, and by the Division of Agriculture and Natural Resources. Such plans shall be reviewed and approved by the Office of the President and the Office of the General Counsel before they are officially promulgated. Inquiries regarding the University's equal employment opportunity policies may be directed to the Affirmative Action Contact, University of California, Agriculture and Natural Resources, 2801 Second Street, Davis, CA 95618 (530) 750-1318.